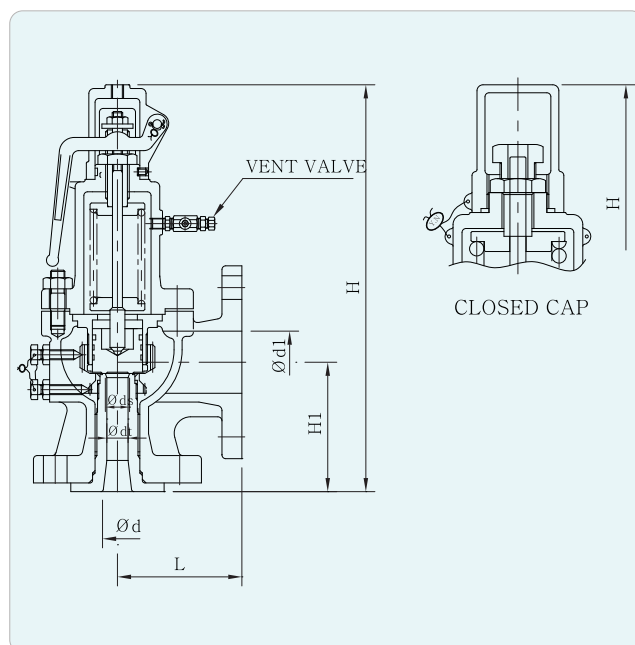


FSV-2F | Full Bore Safety Relief Valve



► Specifications

Type	Working Fluid	Setting Pressure (kgf/cm ²)	Working Temperature	Materials		Connection
				Body	Trim	
Lever	Steam, Air	0.35~22	MAX. 250°C	Cast Steel	Stainless Steel	JIS Flanged ANSI Flanged
No Lever	Water, Oil					

► Dimensions

Size	Part	d	dt	ds	L	H1	H	Lift	Inlet	Outlet
15A × 25A		15	11.5	14.5	95	85	282	3.0	JIS 10K, 20K RF Flanged	JIS 10K FF Flanged
20A × 25A		20	15	17.5	95	85	282	3.8		
25A × 40A		25	19	22	100	104	320	4.8		
32A × 65A		32	30	35	115	123	386	7.5		
40A × 65A		40	30	35	115	123	386	7.5		
50A × 80A		50	38	44	128	130	476	9.5		
65A × 100A		65	49	57	145	150	547	12.3		
80A × 125A		80	61	71	162	168	598	15.2		
100A × 150A		100	76	88	190	197	725	19.0		
125A × 200A		125	95	114	220	222	895	24.0		
150A × 200A		150	115	133	225	230	953	28.7		
200A × 250A		200	150	175	270	255	1121	37.5		
250A × 300A		250	200	230	410	350	1720	50.0		

※주문에 따라 입·출구플랜지 KS B6216, ANSI 규격으로도 제작할 수 있습니다. 온도 235°C 이상은 덮개 개방형으로 제작 - 산업안전관리공단 발체